

TRiCART

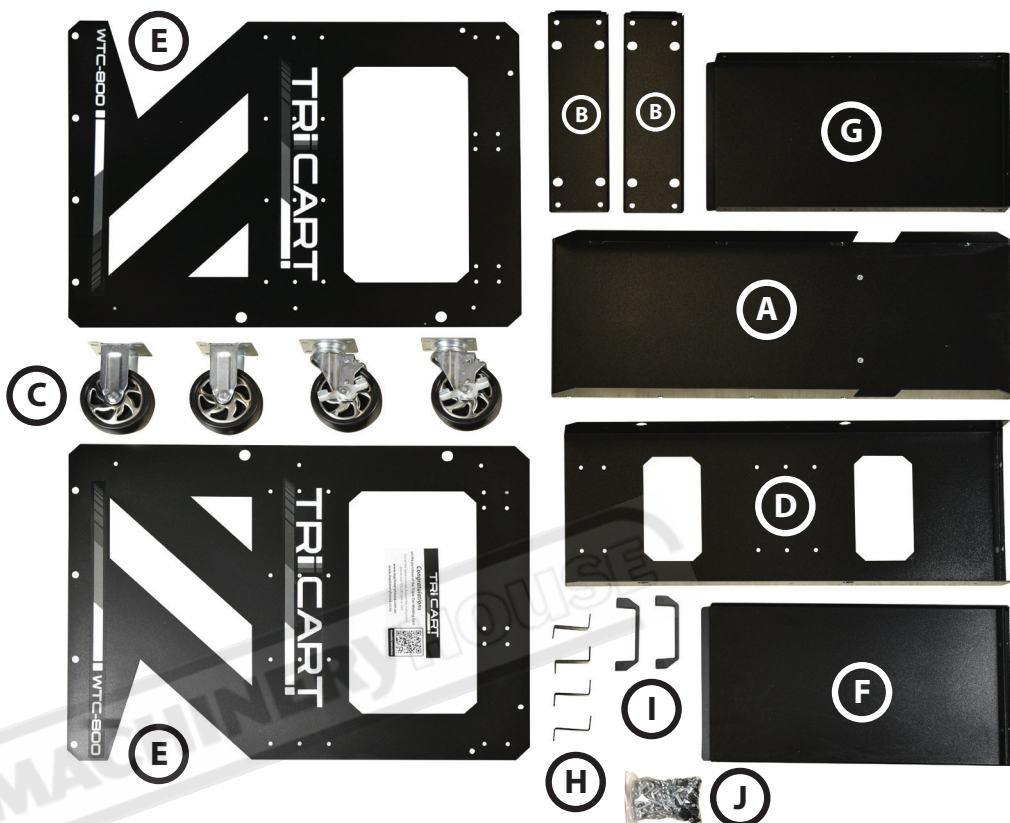
Assembly Instructions

WTC-800 - Triple-Tier Welding Cart



Parts List

- A. Bottom Shelf
- B. Wheel Brace
- C. Castor Wheels
- D. Vertical Support
- E. Side Panels
- F. Middle Shelf
- G. Top Shelf
- H. Torch & Lead Holders
- I. Handles
- J. Nuts / Bolts & Chain



- Recommended load bearing capacity (including cylinder) not to exceed 200kg
- Recommended up to 1 x E size OR 2 x D size gas bottles
- Only use trolley for the purpose intended

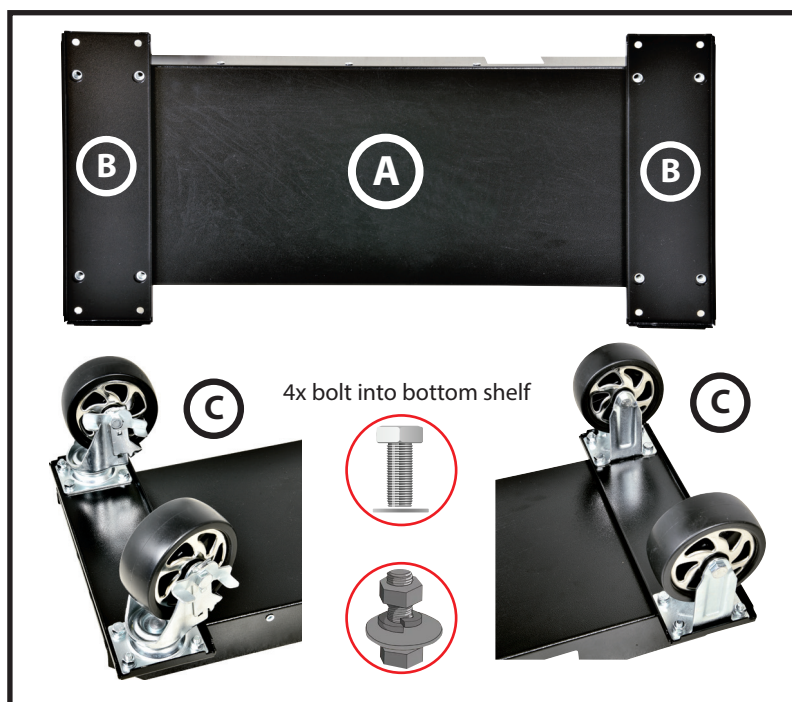
Step 1

A. Turn bottom shelf (A) over and align wheel brace (B) into place

B. Place castor wheels (C) in position and bolt into place

- 8 x Large bolt & washer, bolt into nut inserts
- 8 x Large bolt / washer & split washer

NOTE: Swivel wheel with brake go on the front on the trolley

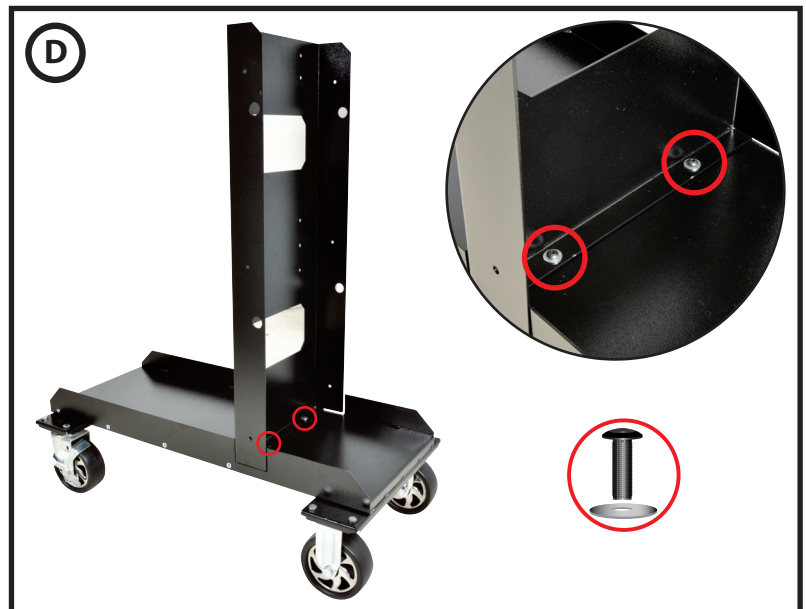


Step 2

Place vertical support (D) into slot on bottom shelf, position cutouts over nut inserts and bolt into place

- 2 x Hex bolts & large washer
bolt into nut inserts

NOTE: Two bolts need large washers

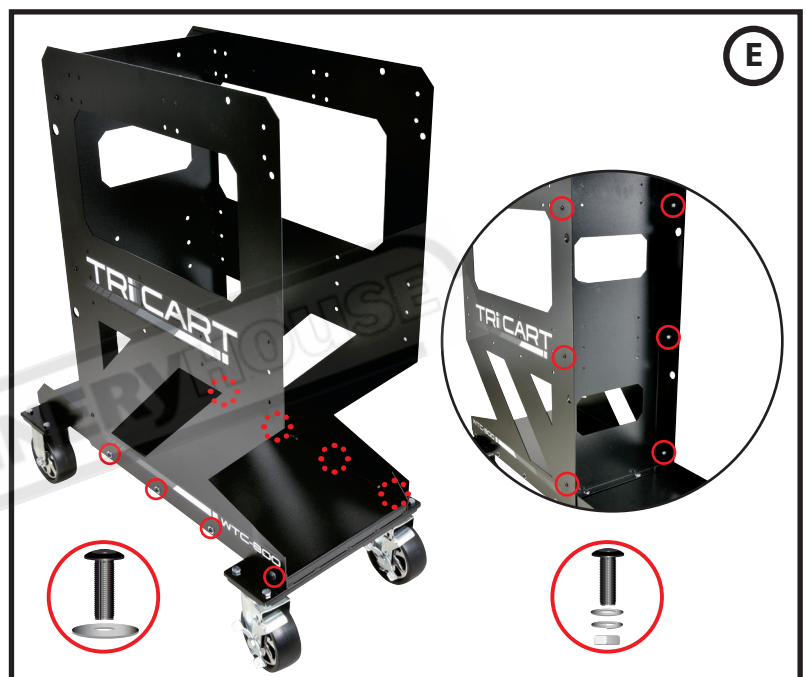


Step 3

Place both Side Panels (E) into position with cutouts over nut inserts and bolt into place.

- 6 x Hex bolt/washer/spring washer & nut
- 8 x Hex bolt & large washer

NOTE: Bolts on the bottom shelf need large washers

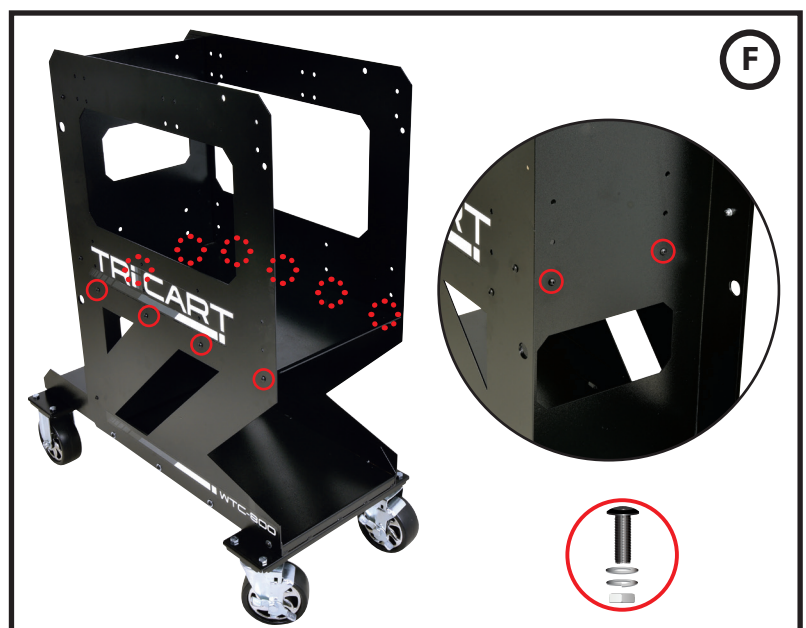


Step 4

Place middle shelf (F) into position bolt into place

- 10 x Hex bolt/washer/Spring washer & nut

NOTE: Shelf has three different height positions depending on machines size.

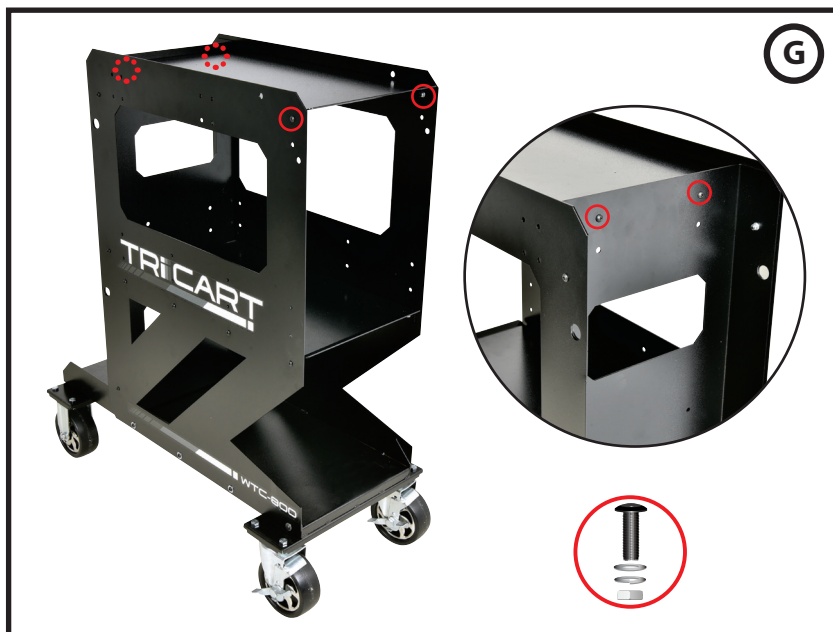


Step 5

Place Top shelf (G) into position bolt into place. Only use six bolts leaving middle holes for adding torch and lead holders.

- 4 x Hex bolt/washer/spring washer & nut

NOTE: Shelf has two different height positions depending on machines size.



Step 6

Add 4 x torch & lead holders (H) to both side

- 8 x Hex bolt/washer/spring washer & nut

NOTE: If you don't install the torch and lead holders add remaining bolts to shelf.



Step 7

Bolt 2x handles (I) to the front of side panels

- 4 x Hex Socket Button screw & barrel connector nuts



Step 8

Attached gas bottle chains (J) to vertical support

NOTE: Ensure gas bottle is secure with chains when mounted and correct PPE is worn when welding.

